

AZURE DEVELOPMENT

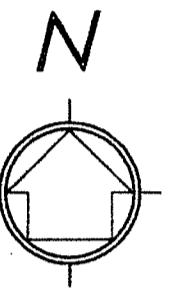
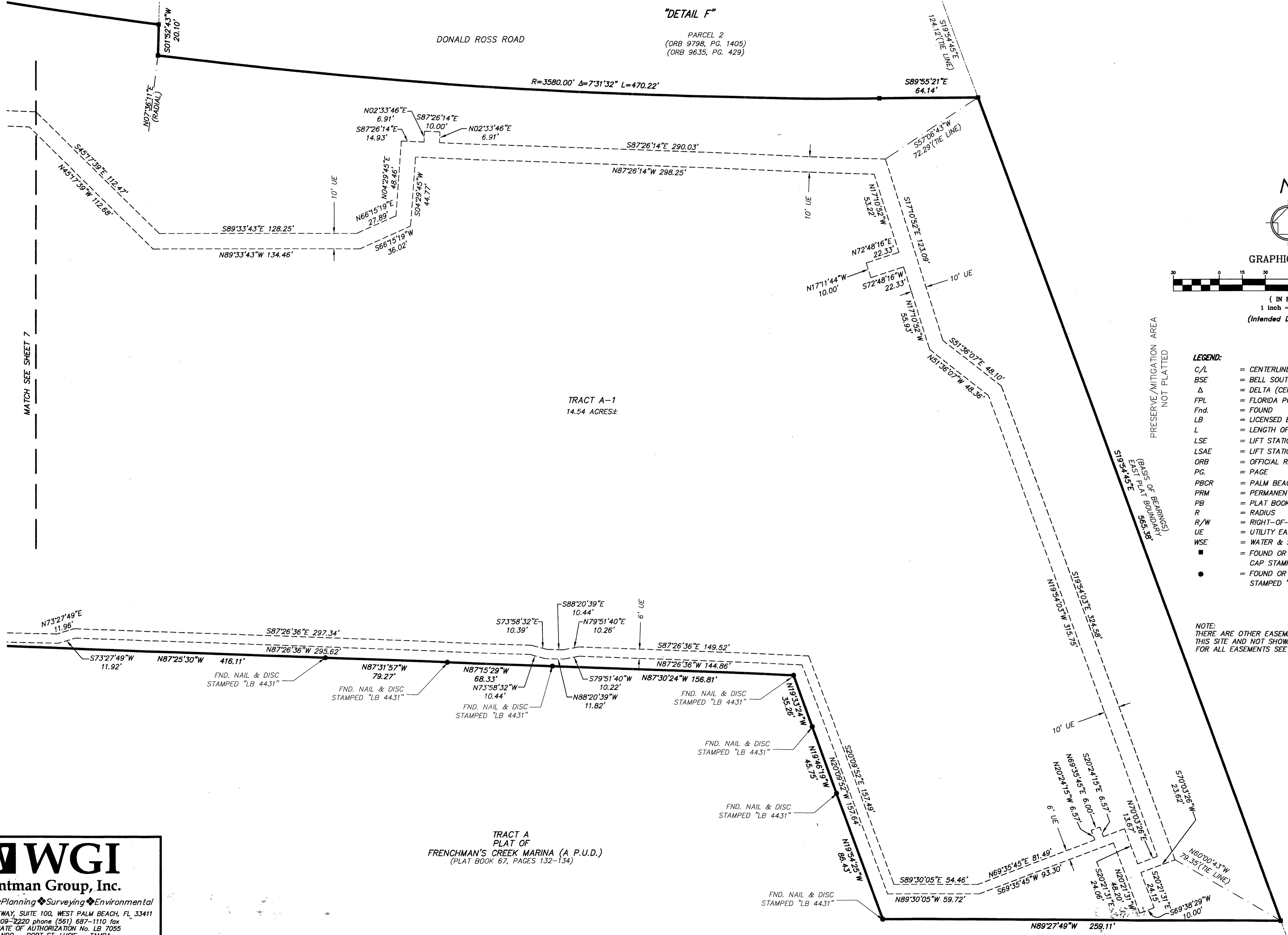
BEING A REPLAT OF A PORTION OF FRENCHMAN'S YACHT CLUB DEVELOPMENT, ACCORDING TO THE PLAT THEREOF, AS RECORDED IN PLAT BOOK 108, AT PAGE 55 THROUGH 56 INCLUSIVE, OF THE PUBLIC RECORDS OF PALM BEACH COUNTY FLORIDA, SAID LANDS LYING AND SITUATE IN SECTION 29, TOWNSHIP 41 SOUTH, RANGE 43 EAST, CITY OF PALM BEACH GARDENS, PALM BEACH COUNTY, FLORIDA

28

State of Florida }
 County of Palm Beach } SS
 THIS PLAT WAS FILED FOR RECORD AT _____ M.
 THIS _____ DAY OF _____
 A.D. 2014 AND DULY RECORDED
 IN PLAT BOOK _____ ON
 PAGES _____ THROUGH _____
 SHARON R. BOCK
 CLERK AND COMPTROLLER
 BY: _____
 DEPUTY CLERK

"DETAIL F"

PARCEL 2
 (ORB 9798, PG. 1405)
 (ORB 9635, PG. 429)



GRAPHIC SCALE



(IN FEET)
 1 inch = 30 ft.

(Intended Display Scale)

LEGEND:

- C/L = CENTERLINE
- BSE = BELL SOUTH EASEMENT
- Δ = DELTA (CENTRAL ANGLE)
- FPL = FLORIDA POWER & LIGHT
- Fnd. = FOUND
- LB = LICENSED BUSINESS
- L = LENGTH OF ARC
- LSE = LIFT STATION EASEMENT
- LSAE = LIFT STATION ACCESS EASEMENT
- ORB = OFFICIAL RECORDS BOOK
- PG. = PAGE
- PBCR = PALM BEACH COUNTY RECORDS
- PRM = PERMANENT REFERENCE MONUMENT
- PB = PLAT BOOK
- R = RADIUS
- R/W = RIGHT-OF-WAY
- UE = UTILITY EASEMENT
- WSE = WATER & SEWER EASEMENT
- = FOUND OR SET 4"x4" CONC. PRM & ALUMINUM CAP STAMPED "LB 7055" EXCEPT AS NOTED.
- = FOUND OR SET NAIL & DISC STAMPED "LB 7055" EXCEPT AS NOTED.

NOTE:
 THERE ARE OTHER EASEMENTS OF RECORD THAT AFFECT THIS SITE AND NOT SHOWN FOR CLARITY PURPOSES. FOR ALL EASEMENTS SEE SHEET 2.

MATCH SEE SHEET 7

PRESERVE/MITIGATION AREA NOT PLATTED

BASIS OF BEARINGS EAST PLAT BOUNDARY 565.38 5195445E



Engineering ♦ Planning ♦ Surveying ♦ Environmental
 2035 VISTA PARKWAY, SUITE 100, WEST PALM BEACH, FL 33411
 (866) 909-2220 phone (561) 687-1110 fax
 CERTIFICATE OF AUTHORIZATION No. LB 7055
 ORLANDO - FORT ST. LUCIE - TAMPA
 THIS INSTRUMENT WAS PREPARED BY DEREK G. ZEMAN, P.S.M.
 PROFESSIONAL SURVEYOR AND MAPPER, LICENSE NO. 5655
 FOR THE FIRM: WANTMAN GROUP, INC.

TRACT A
 PLAT OF
 FRENCHMAN'S CREEK MARINA (A P.U.D.)
 (PLAT BOOK 67, PAGES 132-134)